

# Welcome to Room 207!

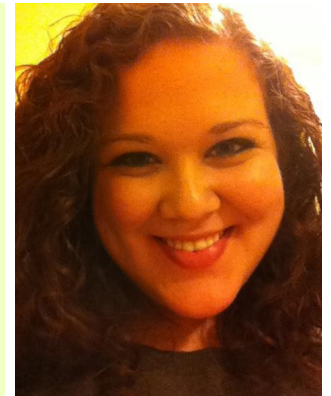
The contents of this packet will help prepare you and your child for the new school year. It provides information on myself, as well as information on:

- ◆ How to contact me
- ◆ Classroom social media
- ◆ My website & its resources
- ◆ Remind Updates
- ◆ Class Syllabus
- ◆ Rubrics
- ◆ Reassessments
- ◆ Parent Survey

## About Miss Hartman

This is my third year teaching English Language Arts at Excelsior Springs Middle School, and I'm so excited for the new school year! I graduated from Northwest Missouri State University with a Comprehensive Bachelors of Science Degree in English Education, and am currently wrapping up my Masters in English with an Emphasis in Pedagogy. In addition to teaching at ESMS, I'm also the Intramural Activities Director, a Senate Bill 319 Reading Tutor, a member of our Instructional Technology Team, a First Lego League Coach, and a W.E.B. Sponsor. As you can see, I keep myself pretty busy!

It is so important to me that you and your child feel up to date with everything going on in our classroom. To help ensure open lines of communication, I've included information (see below) on how to stay in touch with myself, as well as see what we're doing in class. If you ever have questions or concerns, *please* contact me!



Miss Hartman

## Important Dates

8/13	1st day of School
9/7	Labor Day
9/11	Mid Term
9/28	No School

## Stay in the Know!

### Contact Me!

**Phone:** (816) 630-9230 ext. 3207  
**Email:** khartman@ga.essd40.com  
 kharman@estigers.k12.mo.us

### Follow Me!

**Website:** ESMSKHartman.weebly.com  
**Instagram:** ESMSKHartman  
**Twitter:** ESMSKHartman

## Classroom Website

My classroom website is updated weekly with our schedule and activities, includes pictures of students working, copies of the syllabus and rubrics, a copy of our classroom reassessment form, notes on reading strategies and writing, anchor charts, and information on Scholastic book orders. You can access it at [ESMSKHartman.weebly.com](http://ESMSKHartman.weebly.com)



## Classroom Reassessments

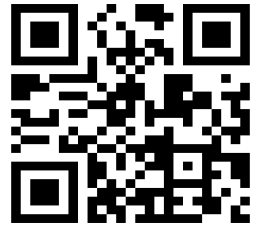
If a student does not master a standard, he or she will have the chance to reassess. I am available before school every school day (6:40-7:10am), and available after school by appointment. In order to reassess, a student must first complete the reassessment form, have it signed by a parent, and then turned in in order to schedule a reassessment date. Forms are available online on my website.



## Parent Survey

Please take the parent survey using the link (below) or the QR code. It will help me understand your contact preferences, as well as you family's access to technology.

Parent Survey link: <http://tinyurl.com/ESMS207>



## Scholastic Book Orders

To help foster a love of reading in my students, I take monthly Scholastic Book Orders. If you would like to order for your child, you may have him or her pick up a catalog from my classroom, or order online via the Scholastic website. To place an order, you will need my class code, **MB82D**. Orders earn points that are used to stock our classroom library!



## Remind Updates

In an effort to keep parents and students updated, I will be sending out Remind notifications throughout the school year. Remind is a safe, free communication service that allows parents and students to enroll in text message notifications. To enroll, text your/your student's class code (see below) to 81010

ELA-I code: @ESMS-ELA1

ELA-II code: @ESMS-ELA2

## *6th Grade English Language Arts Syllabus*

*-Miss Kaitlin Hartman-*

630-9230 (ext. 3207)

- [ESMSKHartman.weebly.com](http://ESMSKHartman.weebly.com) -

[khartman@estigers.k12.mo.us](mailto:khartman@estigers.k12.mo.us)

### *Course Description*

The 6th grade ELA classes cover the areas of communication skills including research, vocabulary, reading, writing, speaking, and listening. Topics covered include narrative, informational, and persuasive writing; proper sentence and paragraph structure, correct spelling, use of punctuation and proper capitalization. Emphasis is placed on learning the steps of the writing process; pre-writing, drafting, editing, revising, and publishing the final copy of writing. Students will also be engaged in the reading of a variety of novels and text types throughout the school year. In addition, students will research and create projects based on the learning objectives of each unit. The Common Core State Standards are the basis of the curriculum.

### *Subjects of Emphasis*

- ◆ **Writing:** grammar, punctuation, writing process, various writing styles, research, variety of outlets
- ◆ **Reading:** novel studies, comprehension, fluency, reading strategies, analysis
- ◆ **Speaking & Listening:** Presentations, audience skills, use of technology

### *Supplies:*

The required materials for ELA consist of a data and assessment folder, a composition notebook for daily writing, a binder, and a pencil case with pens and pencils. Data folders and composition notebooks will be kept in the classroom for safekeeping. On occasion I may ask students to bring additional materials to class, or they may need additional materials for class projects. Most of these supplies are included on the 6th grade supply list and should be at school already. If a supply is needed that is not listed, I will give plenty of notice and a few days for students to purchase the supplies, such as poster board or other display items.

### *Grading Procedures:*

See pages 25-26 in the student handbook for information about standards-based learning, progress reports, report cards, and feedback about learner behaviors. Homework is assigned and is important for students to practice, acquire new knowledge, and apply new skills. The motivation for doing homework should come from each student's clear understanding that it will contribute to their learning, not compliance or grading. Homework will be evaluated but not included in the final grade.

### *Reassessment Guidelines:*

See student handbook pages 25-26 for more information about reassessment guidelines.

### *Updates:*

Please check my website for weekly updates on what our class is working on in ELA!

My goal is to prepare our children to be productive, responsible citizens and your assistance as parents is greatly appreciated. I encourage parental involvement, and will strive to communicate the successes and struggles of your child throughout the school year. Please feel free to contact me by phone or email throughout the year. I look forward to a great year!

# 6th Grade English Language Arts Rubrics (1/5)

## Theme, Central Idea, and Summarizing Standard Rubric

### 4.0 - In depth Applications

- **4.0A I can** analyze the development of the theme throughout a text.

### 3.0 - Expected Knowledge and Skills

- **3.0A I can** summarize the main idea using supporting details.
- **3.0B I can** provide a summary of the text distinct from personal opinions or judgments.

### 2.0 - Foundational Knowledge and Skills

- **2.0A I can** identify the main idea of a text.

## Plot and Conflict Standard Rubric

### 4.0 - In depth Applications

- **4.0A I can** explain how a story's plot changes using evidence from the text to support my claim.

### 3.0 - Expected Knowledge and Skills

- **3.0A I can** identify all parts of a plot in a story (Exposition, Rising Action, Climax, Conflict, Setting, Falling Action, and Resolution).

### 2.0 - Foundational Knowledge and Skills

- **2.0A I know** the parts of plot (Exposition, Rising Action, Climax, Conflict, Setting, Falling Action, and Resolution).

# 6th Grade English Language Arts Rubrics (2/5)

## Drawing Conclusions/Inferring Standard Rubric

### 4.0 - In depth Applications

- 4.0A I can cite or quote specific details from the text to support my conclusions.

### 3.0 - Expected Knowledge and Skills

- 3.0A I can use evidence from the text and what I already know to make an inference or draw a conclusion on what I've read.

### 2.0 - Foundational Knowledge and Skills

- 2.0A I can make a prediction on what is going to happen in the text.

## Poetic Devices Standard Rubric

### 4.0 - In depth Applications

- 4.0A I can translate figurative language.

### 3.0 - Expected Knowledge and Skills

- 3.0A I can identify figurative language used in a text (simile, metaphor, hyperbole, personification, onomatopoeia, and alliteration).

### 2.0 - Foundational Knowledge and Skills

- 2.0A I can define figurative language terms (simile, metaphor, hyperbole, personification, onomatopoeia, and alliteration).

# 6th Grade English Language Arts Rubrics (3/15)

## Argumentative Writing Standard Rubric

### 4.0 - In depth Applications

- 4.0A I can write my argument and use a variety of credible sources to back up my claim, as well as address a counterclaim.

### 3.0 - Expected Knowledge and Skills

- 3.0A I can state my claim and use relevant evidence from multiple sources to support my argument.

### 2.0 - Foundational Knowledge and Skills

- 2.0A I can state a claim and use supporting details.

## Narrative Writing Standard Rubric

### 4.0 - In depth Applications

- 4.0A I can consistently use dialogue correctly throughout my narrative.
- 4.0B I can write a well-developed plot, using all parts of plot.

### 3.0 - Expected Knowledge and Skills

- 3.0A I can use dialogue correctly in my narrative.
- 3.0B I can include all parts of plot in my story.

### 2.0 - Foundational Knowledge and Skills

- 2.0A I can attempt to use dialogue.
- 2.0B I can write a story with a beginning, middle, and end.

# 6th Grade English Language Arts Rubrics (4/5)

## Speaking Standard Rubric

### 4.0 - In depth Applications

- 4.0A I can synthesize information and facilitate a discussion that makes others think critically.

### 3.0 - Expected Knowledge and Skills

- 3.0A I can connect with or engage my audience in a variety of ways (Examples: eye contact, volume, description, evidence supporting a claim audience participation, clear pronunciation, etc.).
- 3.0B I can respond to someone else's information and ideas.

### 2.0 - Foundational Knowledge and Skills

- 2.0A I can state or read information
- 2.0B I can share or communicate information and ideas

## Listening Standard Rubric

### 4.0 - In depth Applications

- 4.0A I can evaluate and elaborate on what I am listening to.

### 3.0 - Expected Knowledge and Skills

- 3.0A I can explain the main idea of what I'm listening to.

### 2.0 - Foundational Knowledge and Skills

- 2.0A I can be a respectful audience member (eyes on speaker, without talking).

# 6th Grade English Language Arts Rubrics (5/5)

## Research Standard Rubric

### 4.0 - In depth Applications

- 4.0A I can gather credible information from multiple trustworthy sources and cite it.

### 3.0 - Expected Knowledge and Skills

- 3.0A I can gather and find relevant information on a topic from multiple sources

### 2.0 - Foundational Knowledge and Skills

- 2.0A I can research to find an answer to a question.

*If a student does not demonstrate mastery of a standard or skill, they have the opportunity to reassess after completing and submitting a Request to Reassess form.*



Student Name: \_\_\_\_\_

# Request to Reassess

*Before you can reassess on a n assignment or topic, a Request to Reassess form must be completed, signed by a parent, and turned into your teacher.*

1. In what class did you take the assessment you want to reassess on? (circle one)

ELA I

ELA II

2. What hour do you have this class? \_\_\_\_\_

3. What assignment do you want to reassess? \_\_\_\_\_

4. What was you level of learning on your first assessment of the assignment?

0    1    1.5    1.75    2    2.5    2.75    3    3.5    3.75    4

5. Why was your learning at that level?

-----  
-----

6. What are three things you did to work on your understanding of the topic or skill?

\* \_\_\_\_\_

\* \_\_\_\_\_

\* \_\_\_\_\_

6. When would you like to reassess on this assignment?

Before School

After School

-----

Parent Signature